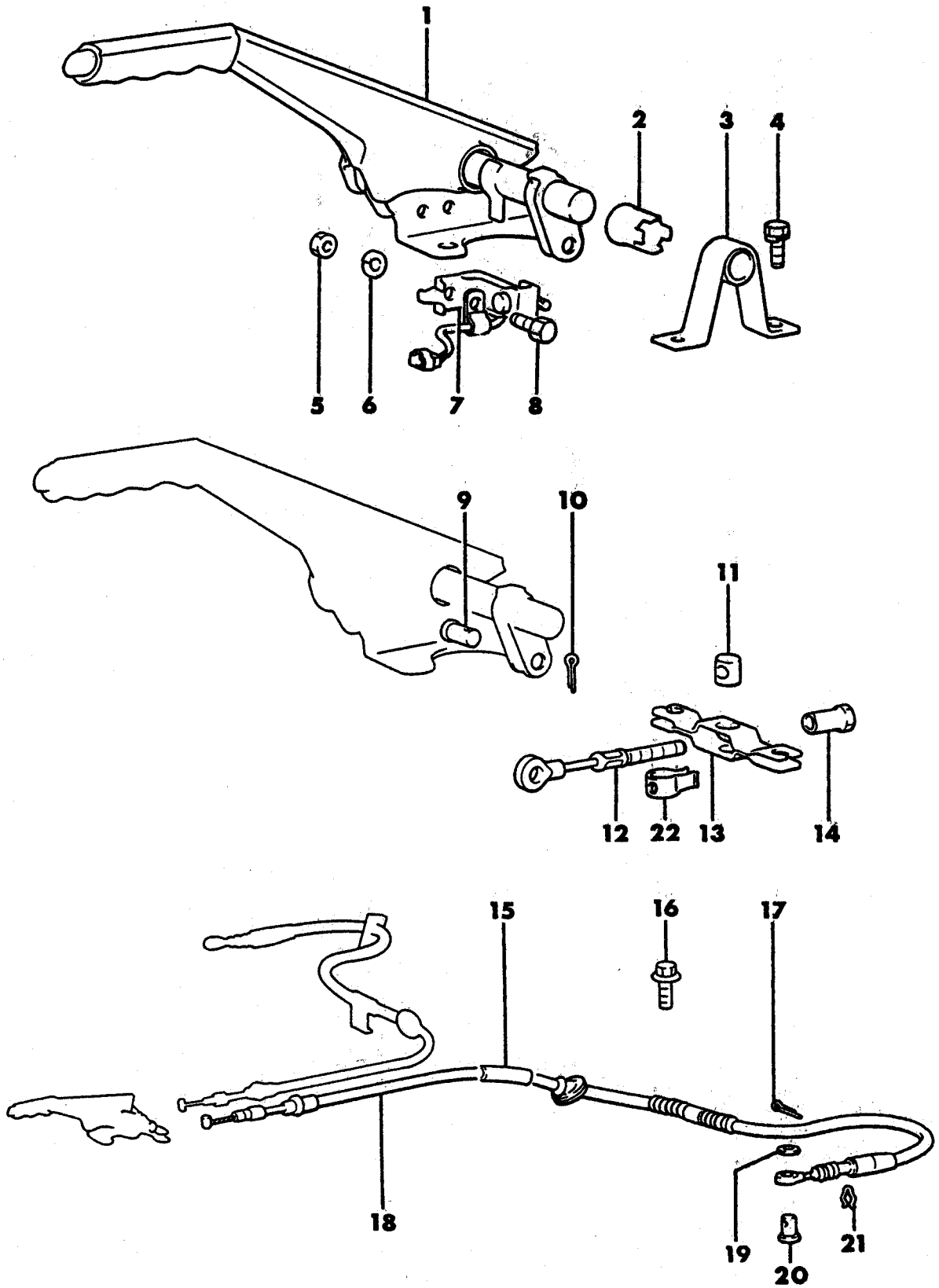


7704 200

CONTROLS, PARKING BRAKE  
24, CONQUEST



# 1987-88 IMPORT PARTS CATALOG

Figure 4-200  
Illus. Page 4-5

**BRAKE, PARKING**

ITEM	PART NUMBER	QTY	BODY	MODEL	DESCRIPTION
<b>CONTROLS, PARKING BRAKE 24, CONQUEST</b>					
1	MB14 0476	1			LEVER, Black
	MB14 0491	1			Red
2	MB14 0139	1			BUSHING
3	MB14 0196	1			STAY, Parking Brake
4	MF24 0053	4			BOLT, w/Washer (8x20)
5	MF43 0003	1			NUT
6	MF45 0403	1			WASHER, Spring
7	MB14 1572	1			SWITCH, Parking Brake
8	MF10 0003	1			BOLT, (5x12)
9	MF47 2998	1			PIN, Clevis (10x20)
10	MF47 2052	1			PIN, Split (2.5x20)
11	MA15 1731	1			PIN, Lever
12	MB14 0290	1			CABLE, Parking Brake
13	MB14 0291	1			EQUALIZER, Cable
14	MB25 6992	1			ADJUSTER, Cable
15	MB00 4664	2			TUBE, Guide
16	MF14 0022	4			BOLT, w/Washer (8x16)
17	MF47 2052	1			PIN, Split (2.5x20)
18	MB14 0281	2			CABLE, Parking Brakes
19	MF45 0006	2			WASHER, Plan (10)
20	MS47 0997	1			PIN, Clevis (10x22)
21	MB00 4655	2			CLIP, Parking Brake Cable
22	MB25 6770	1			HOLDER, Nut

<b>ENGINE:</b>	Q=1500 cc	A=2000 cc	<b>TRANS:</b>	A=Automatic	4=4-Speed Manual
Blank=All	K=1600 cc (w/o Balance Shaft)	F=2600 cc (Car)	Blank=All	M=All Manual	5=5-Speed Manual
	W=2600 cc (Truck)				8=4 x 2 Manual
<b>SERIES:</b>	H=High	<b>MODELS:</b> 24 FWD=2-Dr Hatchback (Colt) 27 RWD-4WD=Pickup (Ram 50, Power Ram 50)		45 FWD=4-Dr Station Wagon (Colt)	
L=Low	P=Premium	24 RWD=2-Dr Hatchback (Conquest) 27 4WD=Sport Utility (Raider)		45 FWD-4WD=Station Wagon (Vista)	
M=Medium	S=Special	41 FWD=4-Dr Sedan (Colt & Eagle Vista)			
AR=Use as Required	# = New Part Number	-- = Non Illustrated Part		Printed in U.S.A. FEBRUARY, 1989	