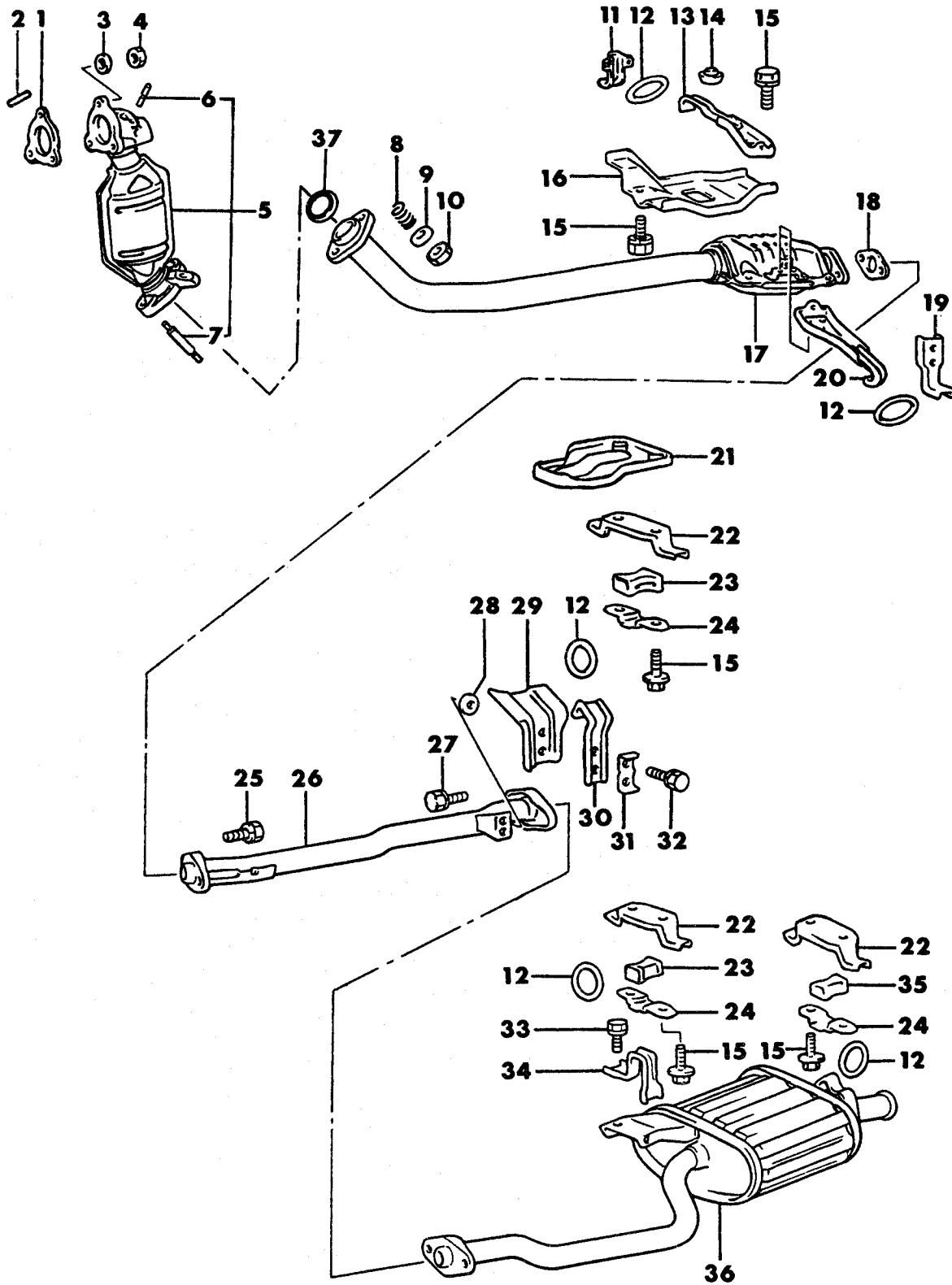


EXHAUST SYSTEM  
 24 RWD - CONQUEST

7711 300 A



1987-88 IMPORT PARTS CATALOG

Figure 11-300  
Illus. Page 11-9

EXHAUST

ITEM	PART NUMBER	QTY	BODY	MODEL	DESCRIPTION
EXHAUST SYSTEM 24 RWD - CONQUEST					
1	MD04 1334	1			GASKET (B)
2	MD05 0074	3			STUD (10x27)
3	MD05 0076	2			WASHER, Plain (10)
4	MD05 0073	3			NUT (10)
5	# MD10 9863	1			CONVERTER ASSEMBLY, Catalytic
6	MD04 1256	2			STUD
7	MD04 1174	2			STUD
8	MB17 9443	2			SPRING
9					WASHER, Plain (12)
	MF45 0007	2			1987
	MB57 7050	2			1988
10	MB05 9359	2			NUT (12)
11					HANGER, Exhaust Pipe - Rt.
	MB25 2316	1			1987
	MB54 9077	1			1988
12	MB05 9522	8			O-RING
13					BRACKET, Catalytic Converter Hanger - Rt.
	MB25 2318	1			1987
	MB54 9079	1			1988
14	MB00 9774	1			STOPPER
15	# MF14 0022	22			BOLT and WASHER (8x16)
16					PROTECTOR, Catalytic Converter Heat
	MB25 2320	1			1987
	MB54 9085	1			1988
17	# MD10 9866	1			CONVERTER ASSEMBLY, Catalytic
18					GASKET, Exhaust Pipe
	MB17 9130	1			1987
	MB54 8649	1			1988
19					HANGER, Exhaust Pipe - Lt.
	MB25 2317	1			1987
	MB54 9078	1			1988
20					BRACKET, Catalytic Converter Hanger - Lt.
	MB25 2319	1			1987
	MB54 9082	1			1988
21					BRACKET, Catalytic Converter Hanger
	MB25 2102	1			1987
	MB54 9075	1			1988
22					HANGER, Exhaust Muffler
	MB15 6319	3			1987
	MB54 8658	3			1988
23	MB11 1791	2			STOPPER, Exhaust Muffler Front Hanger Bracket
24					BRACKET, Exhaust Muffler Hanger
	MB05 9524	3			1987
	MB51 4746	3			1988
25	MF24 1309	2			BOLT and WASHER (12x30)
26					PIPE, Exhaust - Center
	MB25 2474	1			1987
	MB54 9050	1			1988
27	MF24 1282	2			BOLT and WASHER (10x25)
28	MB17 9930	2			SEAT, Exhaust Muffler Hanger
29					INSULATOR, Exhaust Pipe Hanger Heat

<b>ENGINE:</b>	Q=1500 cc	A=2000 cc	<b>TRANS:</b>	A=Automatic	4=4-Speed Manual
Blank=All	K=1600 cc (w/o Balance Shaft)	F=2600 cc (Car)	Blank=All	M=All Manual	5=5-Speed Manual
	W=2600 cc (Truck)				8=4 x 2 Manual

<b>SERIES:</b>	H=High	<b>MODELS:</b>	24 FWD=2-Dr Hatchback (Colt)	27 RWD-4WD=Pickup (Ram 50, Power Ram 50)
L=Low	P=Premium		24 RWD=2-Dr Hatchback (Conquest)	27 4WD=Sport Utility (Raider)
M=Medium	S=Special		41 FWD=4-Dr Sedan (Colt & Eagle Vista)	45 FWD=4-Dr Station Wagon (Colt)
				45 FWD-4WD=Station Wagon (Vista)

AR=Use as Required # =New Part Number --Non Illustrated Part Printed in U.S.A. FEBRUARY, 1989

1987-88 IMPORT PARTS CATALOG

Figure 11-300  
 Illus. Page 11-10

EXHAUST

ITEM	PART NUMBER	QTY	BODY	MODEL	DESCRIPTION
------	-------------	-----	------	-------	-------------

EXHAUST SYSTEM  
 24 RWD - CONQUEST

	MB17 9327	1			1987
	MB54 9073	1			1988
30					HOOK, Exhaust Pipe Hanger O-Ring
	MB17 9326	1			1987
	MB54 9072	1			1988
31					WASHER, Exhaust Pipe Hanger Hook
	MB05 9526	1			1987
	MB51 4750	1			1988
32	MF24 1252	2			BOLT and WASHER (8x22)
33	MF24 0049	2			BOLT and WASHER (8x12)
34					HOOK, Exhaust Muffler Hanger O-Ring
	MB25 2281	1			1987
	MB51 4872	1			1988
35	MB05 9523	1			STOPPER, Exhaust Muffler Rear Hanger Bracket
36					MUFFLER, Main
	MB31 3771	1			w/o Intercooler
	#MB43 1710	1			w/Intercooler 1987
	MB54 9053	1			1988
37	MB17 9442	1			RING, Seal

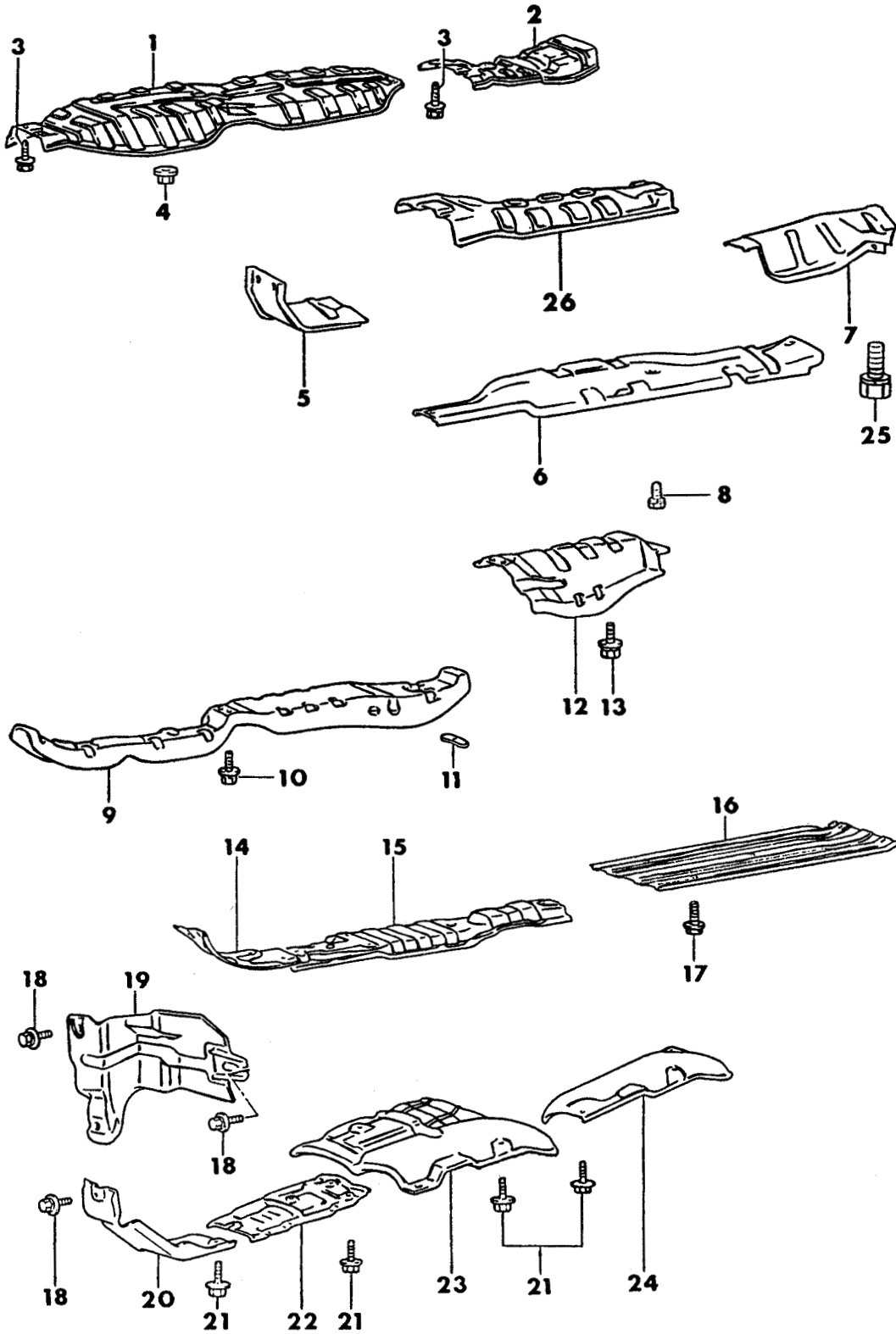
<b>ENGINE:</b>	Q=1500 cc	A=2000 cc	<b>TRANS:</b>	A=Automatic	4=4-Speed Manual
Blank=All	K=1600 cc (w/o Balance Shaft)	F=2600 cc (Car)	Blank=All	M=All Manual	5=5-Speed Manual
	W=2600 cc (Truck)				8=4 x 2 Manual

<b>SERIES:</b>	H=High	<b>MODELS:</b>	24 FWD=2-Dr Hatchback (Colt)	27 RWD-4WD=Pickup (Ram 50, Power Ram 50)
L=Low	P=Premium		24 RWD=2-Dr Hatchback (Conquest)	27 4WD=Sport Utility (Raider)
M=Medium	S=Special		41 FWD=4-Dr Sedan (Colt & Eagle Vista)	45 FWD=4-Dr Station Wagon (Colt)
				45 FWD-4WD=Station Wagon (Vista)

AR=Use as Required      # =New Part Number      - =Non Illustrated Part      Printed in U.S.A.      FEBRUARY, 1989

HEAT SHIELDS - EXHAUST

7711 800 B



1987-88 IMPORT PARTS CATALOG

Figure 11-800  
illus. Page 11-31

EXHAUST

ITEM	PART NUMBER	QTY	BODY	MODEL	DESCRIPTION
HEAT SHIELDS - EXHAUST					
1	#MB35 2920	1		24,41 FWD	PANEL, Heat Protector (A)
2	#MB48 1331	1		24,41 FWD	PANEL, Heat Protector (C)
3	MS24 0121	7		24,41 FWD	BOLT and WASHER (6x16)
4	MS44 0502	1		24,41 FWD	NUT and WASHER (6)
5	MB15 9278	1		24 RWD	PROTECTOR, Heat - Dash Panel
6	MB16 8664	1		24 RWD	PROTECTOR, Heat - Front Floor
7	MB16 8666	1		24 RWD	PANEL, Heat Protector - Rear Floor
8	MF24 3623	7		24 RWD	BOLT and WASHER (6x14)
9					PANEL, Heat Protector - Front Floor
	MB24 6536	1		45 FWD	up to Nov. 1986
	MB40 6922	1		45 FWD	after Dec. 1986
10	MS24 0141	5		45 FWD	BOLT and WASHER (6x16)
11	MB28 7845	1		45 FWD	REINFORCEMENT, Heat Protector - Front Floor
12	MB28 7702	1		45 FWD	PROTECTOR, Heat - Rear Floor
13	MF24 3648	1		45 FWD	BOLT and WASHER (8x14)
14	MB15 6725	1		27 RAM	PROTECTOR, Heat
15	#MB43 7507	1		27 RAM	PANEL, Heat Protector - Front Floor
16					PROTECTOR, Heat - Rear Body Floor
	MB43 7508	1		27 RAM	w/105" W.B.
	MB43 7509	1		27 RAM	W Eng. w/116" W.B.
17	MF14 0003	13		27 RAM	BOLT, Flange (6x12)
18	MF24 3648	3		27 RAIDER	BOLT and WASHER (8x14)
19	#MB27 4645	1		27 RAIDER	PANEL ASSEMBLY, Heat Protector Dash - Upper
20	MB27 4532	1		27 RAIDER	PANEL, Heat Protector
21	MF14 0003	1		27 RAIDER	BOLT, Flange (6x12)
22					PANEL, Heat Protector
	MB27 4759	1		27 RAIDER	up to June 1988
	MB59 1316	1		27 RAIDER	after July 1988
23	MB27 5790	1		27 RAIDER	PANEL, Heat Protector
24	MB15 6727	1		27 RAIDER	PANEL, Heat Protector
25	MF24 3650	1		24 RWD	BOLT and WASHER (8x18)
26	#MB48 1331	1		45 FWD	PROTECTOR, Under Floor Heat - Rear

<b>ENGINE:</b>	Q=1500 cc	A=2000 cc	<b>TRANS:</b>	A=Automatic	4=4-Speed Manual
Blank=All	K=1600 cc (w/o Balance Shaft)	F=2600 cc (Car)	Blank=All	M=All Manual	5=5-Speed Manual
	W=2600 cc (Truck)				8=4 x 2 Manual
<b>SERIES:</b>	H=High	<b>MODELS:</b> 24 FWD=2-Dr Hatchback (Colt)	27 RWD-4WD=Pickup (Ram 50, Power Ram 50)		
L=Low	P=Premium	24 RWD=2-Dr Hatchback (Conquest)	27 4WD=Sport Utility (Raider)	45 FWD=4-Dr Station Wagon (Colt)	
M=Medium	S=Special	41 FWD=4-Dr Sedan (Colt & Eagle Vista)		45 FWD-4WD=Station Wagon (Vista)	
AR=Use as Required	#=New Part Number	-=Non Illustrated Part		Printed in U.S.A.	FEBRUARY, 1989